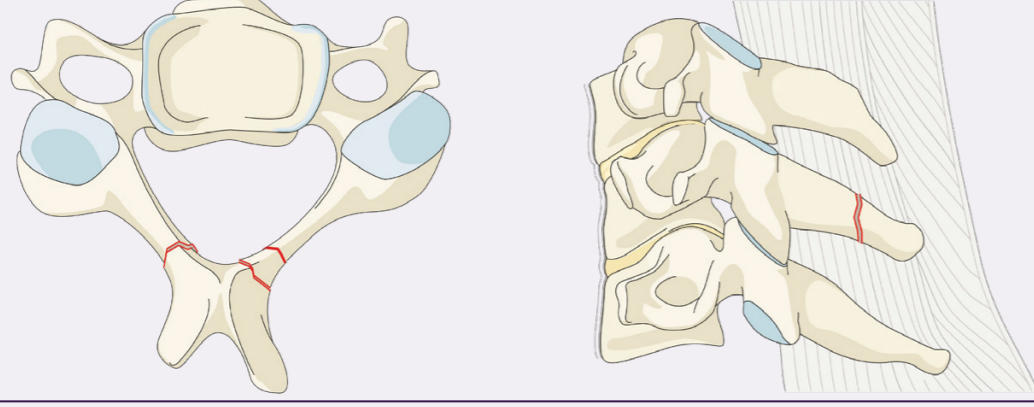
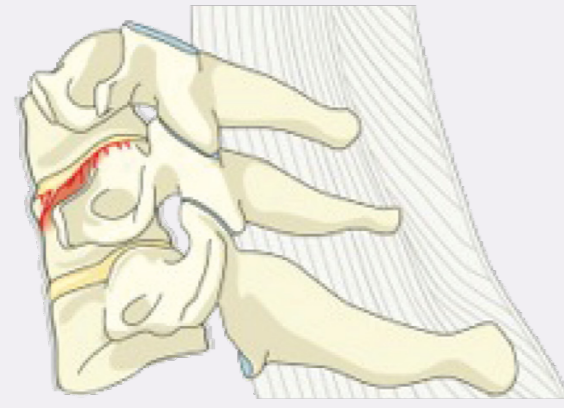


Type A Compression Injuries

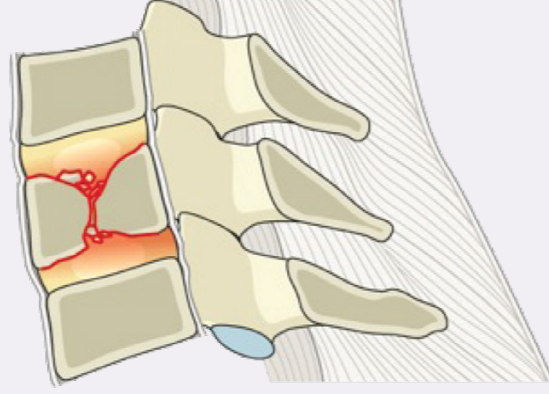
A0 Minor, nonstructural fractures
No bony injury or minor injury such as an isolated lamina fracture or spinous process fracture.



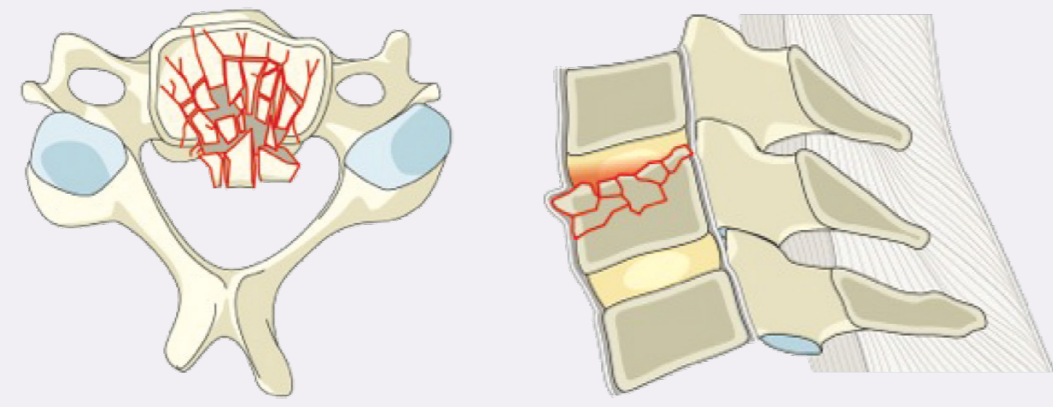
A1 Wedge-compression
Compression fracture involving a single endplate without involvement of the posterior wall of the vertebral body.



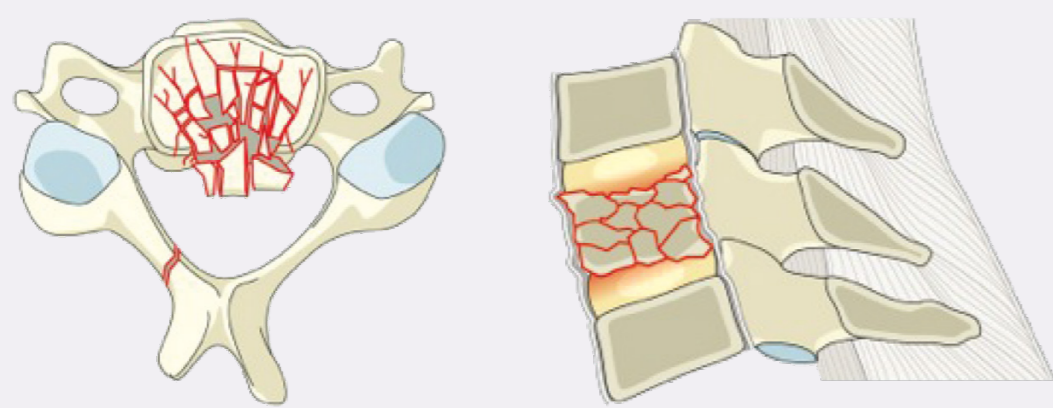
A2 Split
Coronal split or pincer fracture involving both endplates without involvement of the posterior wall of the vertebral body.



A3 Incomplete burst
Burst fracture involving a single endplate with involvement of the posterior vertebral wall.

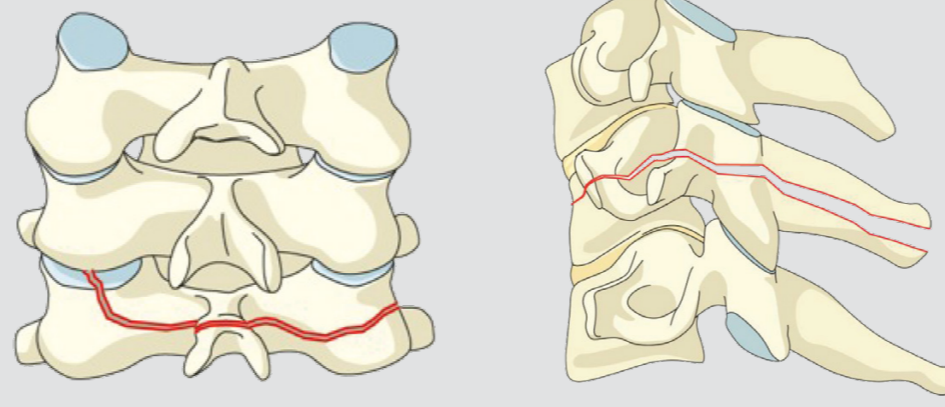


A4 Complete burst
Burst fracture or sagittal split involving both endplates.

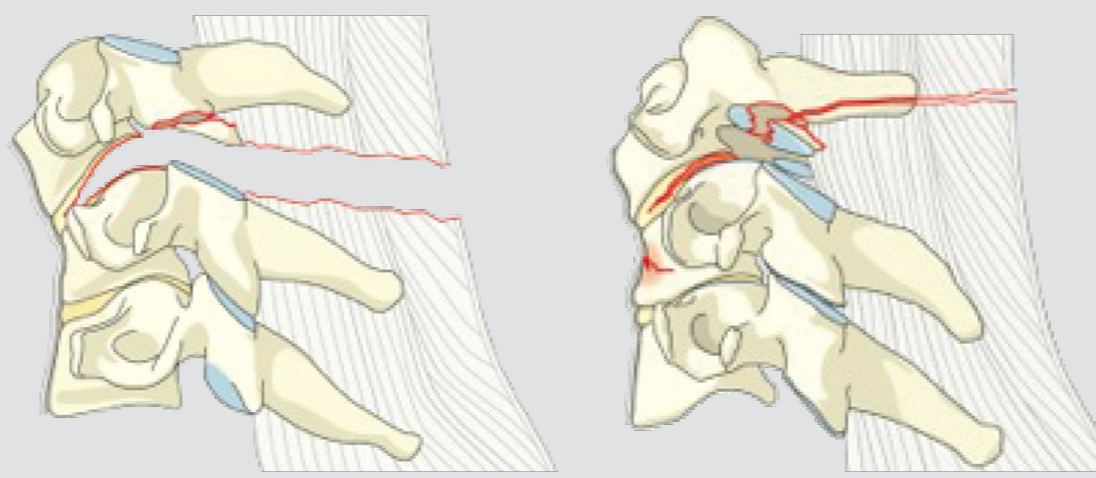


Type B Tension Band Injuries

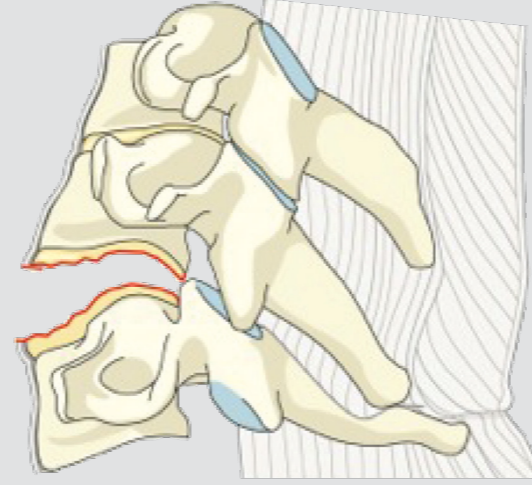
B1 Posterior tension band injury (bony)
Physical separation through fractured bony structures only.



B2 Posterior tension band injury (bony capsuloligamentous, ligamentous)
Complete disruption of the posterior capsuloligamentous or bony capsuloligamentous structures together with a vertebral body, disc, and/or facet injury.

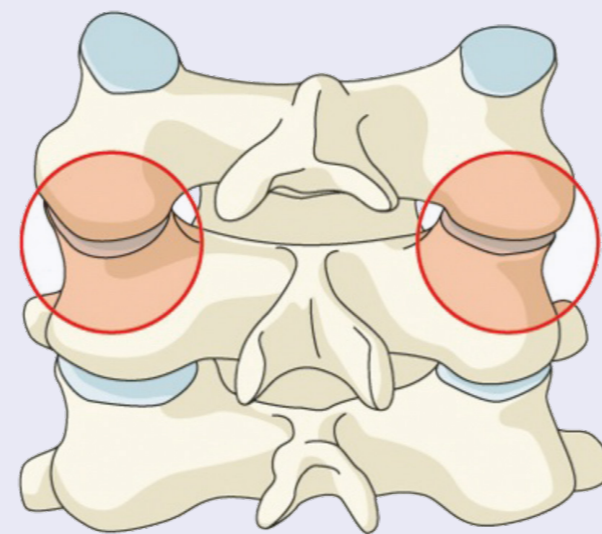


B3 Anterior tension band injury
Physical disruption or separation of the anterior structures (bone/disc) with tethering of the posterior elements.



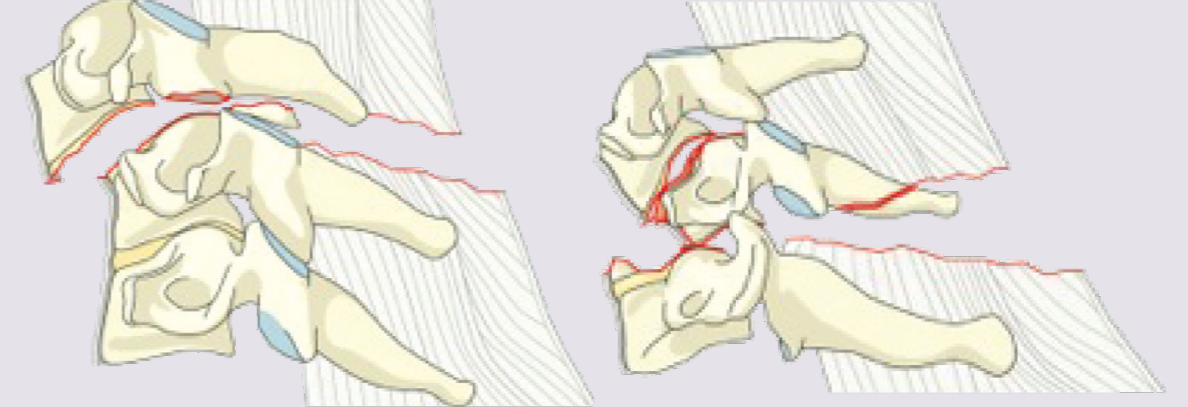
BL Bilateral Injuries

BL Bilateral injury



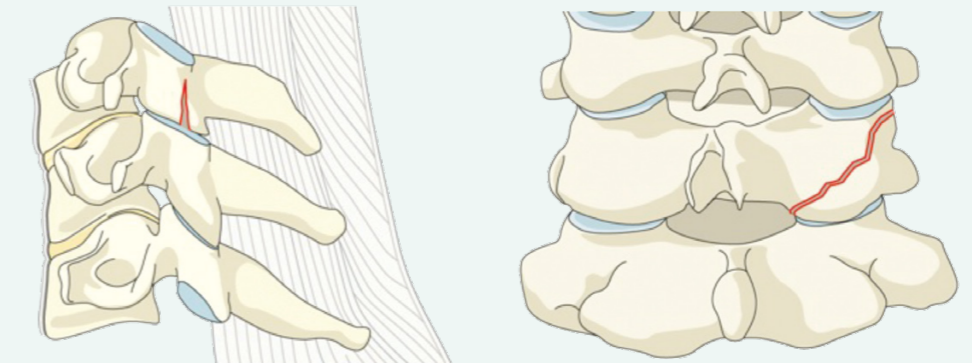
Type C Translation Injuries

C Translational injury in any axis-displacement or translation of one vertebral body relative to another in any direction

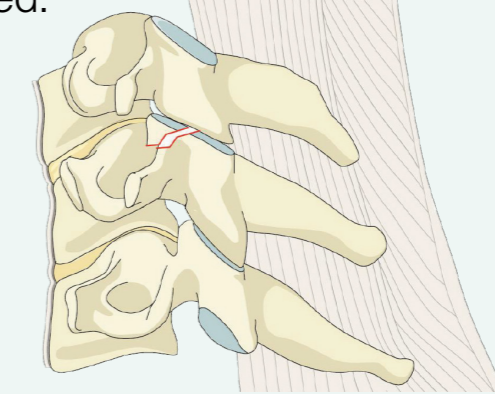


Type F Facet Injuries

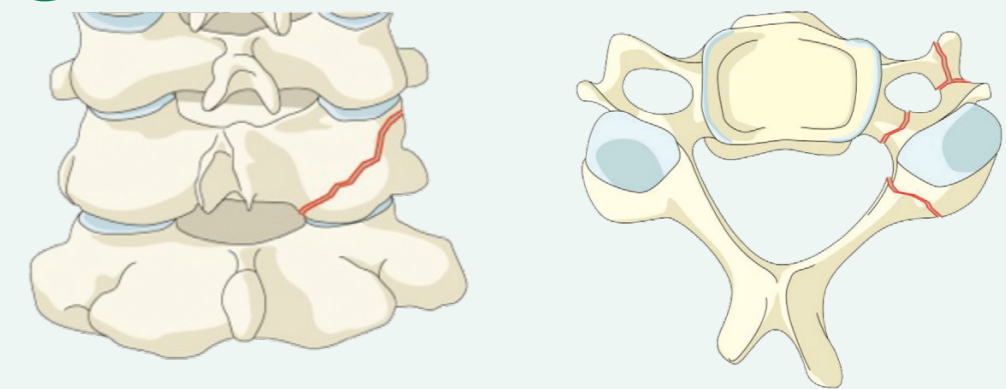
F1 Nondisplaced facet fracture
With fragment <1cm in height, <40% of lateral mass.



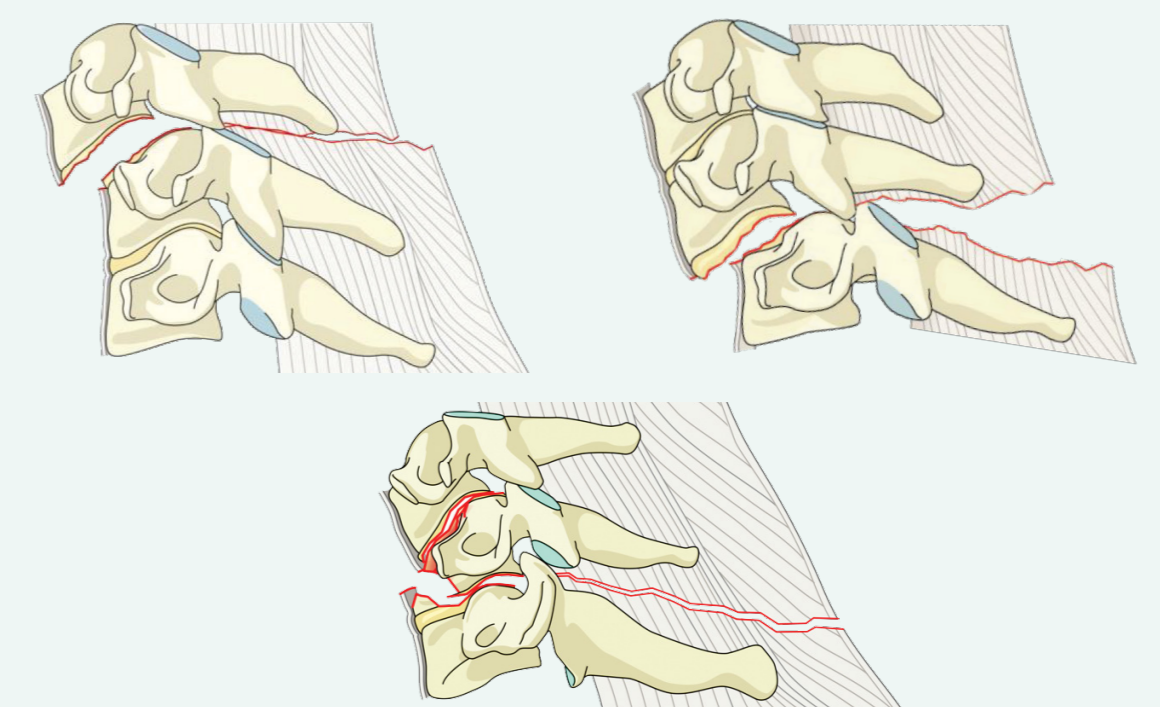
F2 Facet fracture with potential for instability
With fragment >1cm, > than 40% lateral mass, or displaced.



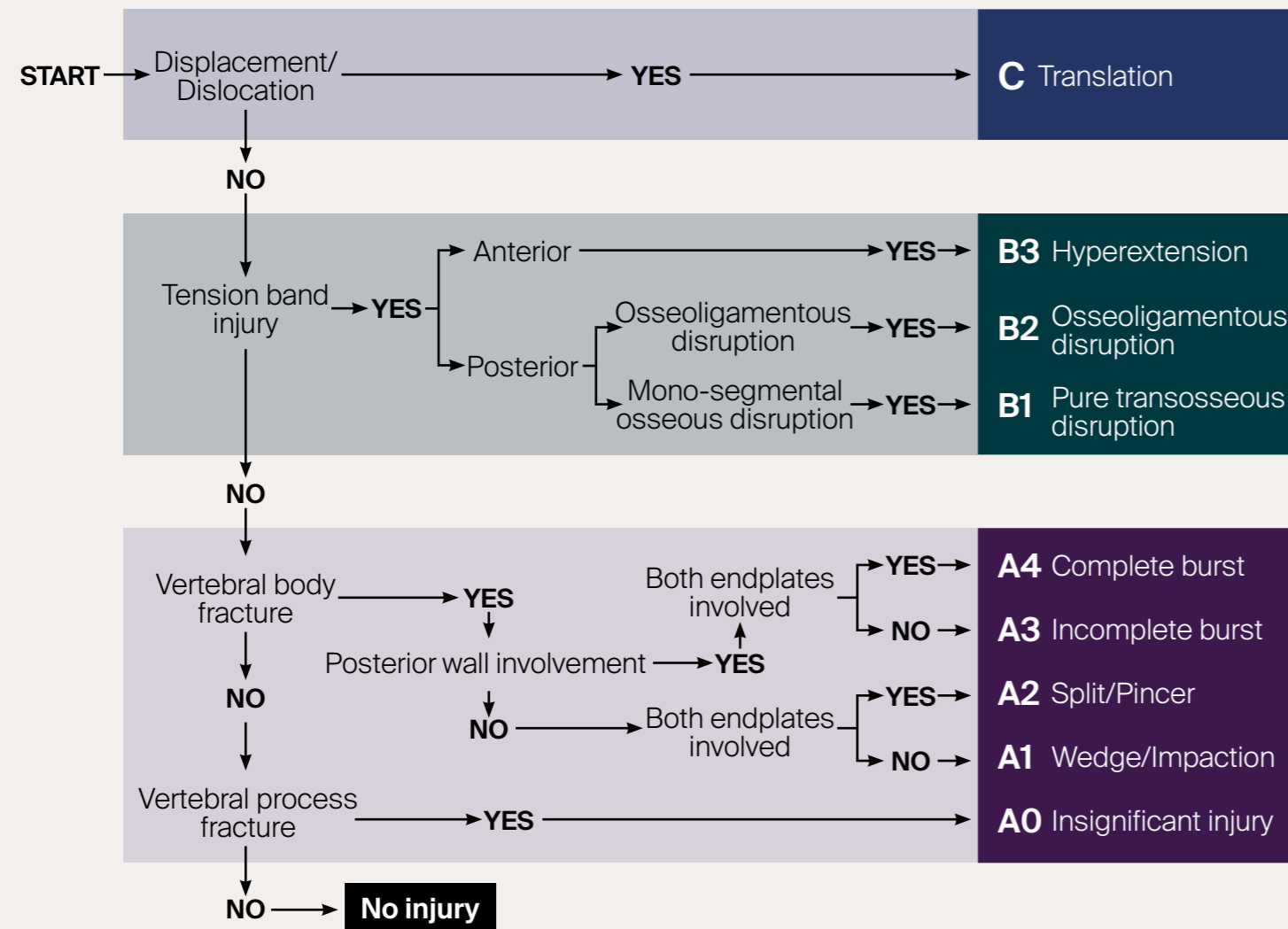
F3 Floating lateral mass



F4 Pathologic subluxation or perched/dislocated facet



Algorithm for morphologic classification



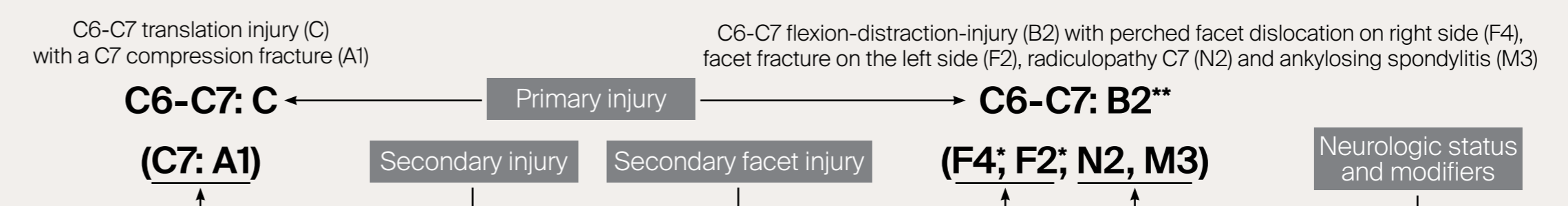
Neurology

Type	Neurological
N0	Neurology intact
N1	Transient neurologic deficit
N2	Radicular symptoms
N3	Incomplete spinal cord injury or any degree of cauda equina injury
N4	Complete spinal cord injury
NX	Cannot be examined
+	Continued spinal cord compression

Modifiers

Type	Description
M1	Posterior Capsuloligamentous Complex injury without complete disruption.
M2	Critical disc herniation.
M3	Stiffening/metabolic bone disease (ie DISH, AS, OPLL, OLF).
M4	Vertebral artery abnormality.

Classification Nomenclature



*If there are multiple injuries to the same facet – for example: small fracture (F1) and dislocation (F4) –, only the highest level facet injury is classified (F4).

**If only facet injuries are identified – no A, B, or C injury –, they are listed first after the level of injury.

Disclaimer:

1. Vaccaro AR, Koerner JD, Radcliff KE, Oner FC, Reinhold M, Schnake KJ, Kandziora F, Fehlings MG, Dvorak MF, Aarabi B, Rajasekaran S, Schroeder GD, Kepler CK, Vialle LR. "AO spine subaxial cervical spine injury classification system." *Eur Spine J.* February 26, 2015. (e-pub)



© 2020 AO Foundation, AO Spine
This work is licensed under the Creative Commons Attribution-NonCommercial-NoDerivatives 4.0 International License.
To view a copy of this license, visit <http://creativecommons.org/licenses/by-nc-nd/4.0/>

Further information:
www.aospine.org/classification